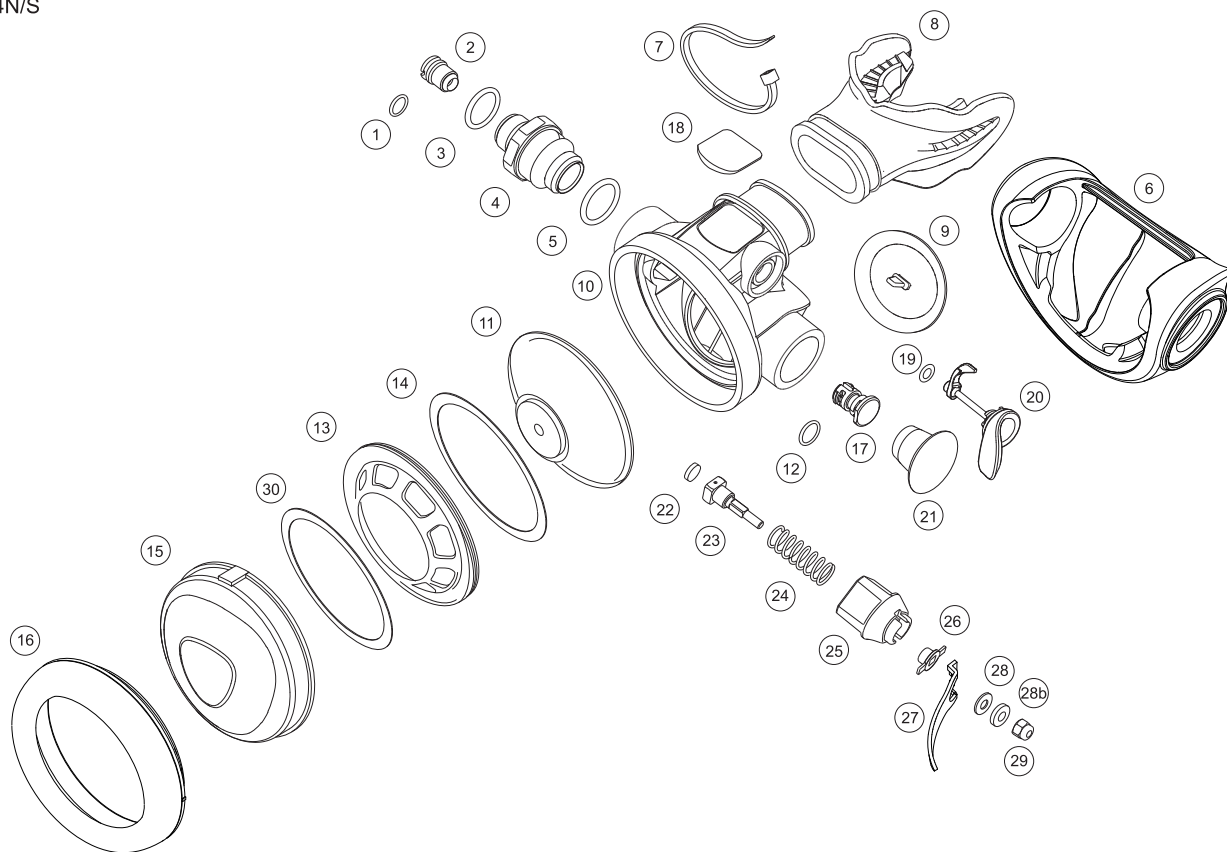


# 2° STADIO EROGATORE SECOND STAGE REGULATOR

## II STADIO

## X-10 PRO NITROX X-10 PRO OCTO NITROX

Seac Ref. 7004N/S



1) O-Ring 2025 6,07 x 1,78 Viton	O-Ring 2025 6,07 x 1,78 Viton	S500021/V
2) Ugello regolazione	Orifice	S842031
3) O-Ring 2050 12,42 x 1,78 Viton	O-Ring 2050 12,42 x 1,78 Viton	S800003/V
4) Attacco frusta	Hose connection	S842032
5) O-Ring 2062 15,60 x 1,78 Viton	O-Ring 2062 15,60 x 1,78 Viton	S77494/V
6) Baffo di scarico X-5 /X-10 Pro	Exhaust tee X-5/X-10 Pro	S700133
7) Fascetta bocccaglio	Mouthpiece strap	S500023
8) Bocccaglio	Mouthpiece	236
9) Valvola di scarico	Exhaust valve	S842035
10) Cassa II stadio X-10 Pro Nitrox	Second stage body X-10 Pro Nitrox	S700104/L
11) Membrana completa	Complete diaphragm	S842003
12) O-Ring 2015 Viton	O-Ring 2015 Viton	23602/V
13) Ghiera filettata interna	Internal retaining ring	S842007
14) Anello antifrizione	Antifriction washer	S842008
15) Calotta X10 Pro Nero	Black X-10 Pro Rubber cover	S882009N
16) Ghiera calotta completa Verde	Green Complete cover retainig ring	S882011V
17) Pin cassa II stadio X-10 PRO	10 Pro Pin II stage	S700119
18) Etichetta X-10 Pro	X-10 Pro Nitrox Label	S700414
19) O-Ring 2018 4,48 x 1,78 Viton	O-Ring 2018 4,48 x 1,78 Viton	S540007/V
20) Deviatore completo X-5 e X-10 Pro	X-5 / X-10 Pro Complete Jetavator	S700120
21) Tappo baffo	Exhaust tee plug	S842021
22) Pastiglia	Rubber seat	S842022
23) Alberino II° stadio	II° Stage stem	S842023
24) Molla II° stadio	II° Stage spring	S842024
25) Supporto leva	Lever support	S842025
26) Guida alberino	Insert housing	S842026
27) Leva	Lever	S842027
28) Rondella inox 3,2 x 7 x 0,5 UNI 6592	3,2 x 7 x 0,5 UNI 6592 stainless steel washer	S842028
28b) Rondella centratura alberino	Stem's truing washer	S842029
29) Dado autobloccante M3	M3 elastic stop nut	S500019
30) Anello antifrizione per calotta	Cover antifriction washer	S842019